

# REPLACEMENT PARTS GUIDE

## 4520 Compact Utility Tractor

### ENGINE

#### ENGINE OIL



[TY26668](#) (10W-30 PLUS-50™ II) (5.4 L (1.4 gal.))  
Change Every 200 Hrs or Annually, whichever comes first.

#### SPIN-ON FUEL FILTER



[RE508202](#) (USE WITH 4024TLV10, 4024TLV01)  
[RE533026](#) (USE WITH 4024HVL11)  
Change after every 400 Hrs/Annually.

#### AIR FILTER



[AP33330](#) (PRIMARY)  
[AP33331](#) (SECONDARY)  
Change every 600 hrs. or annually.

#### JD MULTI PURPOSE HD LITHIUM COMPLEX GREASE



[TY6341](#)  
[TY26183](#)  
Change As Required.

#### OIL FILTER



[RE519626](#)  
Change Every 200 Hrs or Annually, whichever comes first.

#### HOME MAINTENANCE KIT



[LVA21203](#)

### AXLE

#### TIE ROD



[LVA14951](#) (ASSEMBLY)  
[LVA10727](#) (LH)  
[LVA10728](#) (RH)

#### FRONT AXLE OIL



[TY22000](#) (John Deere Low Viscosity Hy-Gard™)  
Change every 50/400/600 Hrs.



### ELECTRICAL

#### KEY



[RE183935](#)

#### ROTARY SWITCH



[LVA21501](#)

#### WET DISCHARGE BATTERY



[TY26442](#) (12 V)

#### LED WORK LIGHT



[LVB25547](#) (OOS) (12 V)

#### HEADLIGHT



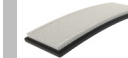
[R136239](#) (12 V 60/55 W)

### FUEL TANK FILLER CAP



FILLER CAP  
[AL213202](#)

### CAB (IF EQUIPPED)



AIR FILTER  
[MIU10010](#) (FRESH)



[MIU10011](#) (RECIRCULATION)

### TRANSMISSION/ HYDRAULIC



TRANSMISSION/HYDRAULIC OIL  
[TY22000](#) (47.3 L (12.5 gal.))  
Change after every 400 Hrs. or annually.

#### OIL FILTER



[LVA13038](#) (TRANSMISSION)  
Change after every 400 Hrs. or annually.

#### V - BELT



[DZ118732](#) (LGTH = 2365 mm, WIDTH = 21 mm)